

G. A. DRG.

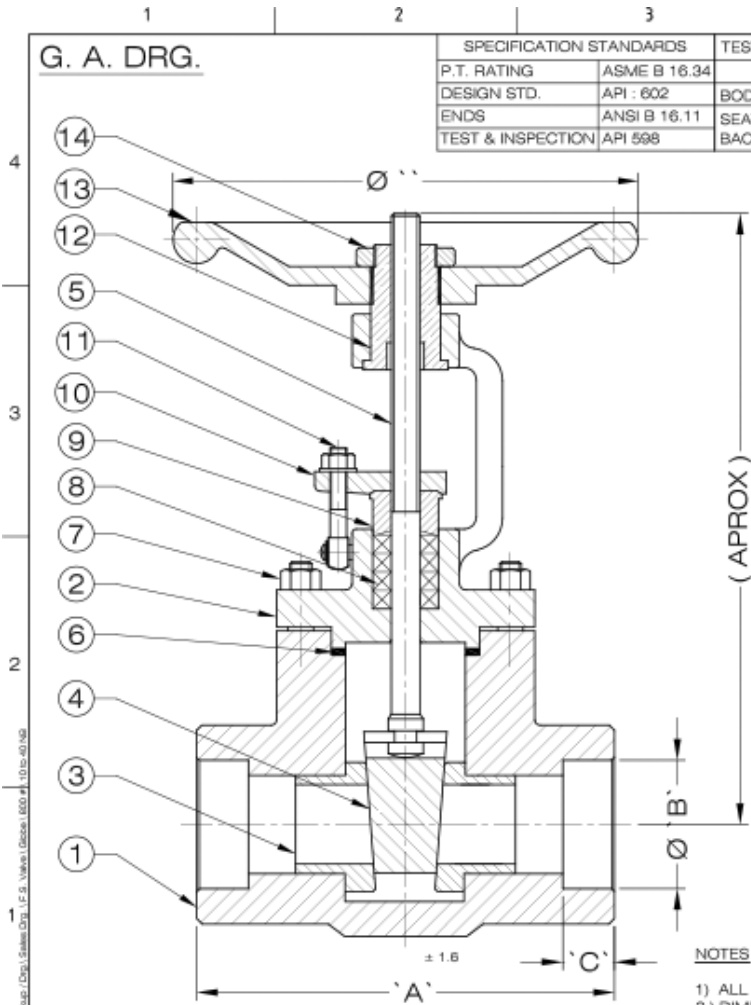
SPECIFICATION STANDARDS		TEST PRESSURE (Kg / Cm ²) 800 #		
P.T. RATING	ASME B 16.34	HYDROSTATIC	AIR	
DESIGN STD.	API - 602	BODY	211	
ENDS	ANSI B 16.11	SEAT	141	6
TEST & INSPECTION	API 598	BACK SEAT		

SIZE	'A'	'B'	'C'	'D'	'E'	(OPEN) F	(CLOSE)
3/8"	85	17.5	9.7	07	110	170	160
1/2"	85	21.7	9.7	10	110	170	160
3/4"	95	27.5	12.7	13	110	185	170
1"	110	33.8	12.7	18	110	194	178
1 1/4"	130	42.6	12.7	24	170	283	252
1 1/2"	130	48.7	12.7	29	170	283	252
2"	144	61.1	15.8	37	170	292	254

Note :- Valve Mounting Dimensions

14	HUT & WASHER	STEEL
13	HAND WHEEL	MALLEABLE IRON IS : 2108
12	YOKE NUT	NI - RESISIT
11	EYE BOLT & NUT	Steel IS : 1367 cl. 8.8/A 194 Gr. 2H/8
10	GLAND PLATE	ASTM - A - 105
9	GLAND	PURE GRAPHITE
8	GLAND PACKING	PURE GRAPHITE
7	BOLT / STUD / NUT	A 193 Gr. B7/A 194 Gr. 2H
6	GASKET	PURE GRAPHITE
5	SPINDLE	SS - 410
4	STOPPER	SS - 410
3	SEAT RING	SS - 410
2	BONNET	ASTM - A - 105
1	BODY	ASTM - A - 105
No.	DESCRIPTION	MATERIAL

MATERIAL & DESCRIPTIONS



NOTES :-

- 1) ALL DIMENSIONS ARE IN MM
- 2) DIMENSIONS 'A' AS PER MANUFACTURES STD.



Dalsons Valves

D - 58, MIDC MIRAJ BLOCK MIRAJ
DIST - SANGLI (M.S.) INDIA

DRAWN	L.B.G.
CHKD.	A.R.D.
APPD.	R.E.D.
SCALE	N.T.S.
DATE	18.12.2010

TITLE :-
800 # GATE VALVE
(SOCKET WELD ENDS)



DRG. No. DV / GTV / F S / 800 / 01

C:\Backup\Drp\G. A. DRG. F.S. Valves\Gates\800#\10 to 40.rvt