

G. A. DRG.

SPECIFICATION STANDARDS		TEST PRESSURE (Kg / Cm ²) 800 #		
P.T. RATING	ASME B 16.34		HYDROSTATIC	AIR
DESIGN STD.	API : 602	BODY	211	
ENDS	ANSI B 16.11	SEAT	141	6
TEST & INSPECTION	API 598	BACK SEAT		

SIZE	'A'	'B'	'C'	'D'	'E'	(OPEN) F	(CLOSE)
3/8"	85	17.5	9.7	07	110	170	160
1/2"	85	21.7	9.7	10	110	170	160
3/4"	95	27.5	12.7	13	110	185	170
1"	110	33.8	12.7	18	110	194	178
1 1/4"	130	42.6	12.7	24	170	283	252
1 1/2"	130	48.7	12.7	29	170	283	252
2"	144	61.1	15.8	37	170	292	254

Note :- Valve Mounting Dimensions

14	HUT & WASHER	STEEL
13	HAND WHEEL	MALLEABLE IRON IS : 2108
12	YOKE NUT	NI - RESISIT
11	EYE BOLT & NUT	Steel IS : 1367 cL.8.8/A 194 Gr. 2H/8
10	GLAND PLATE	ASTM - A - 105
9	GLAND	PURE GRAPHITE
8	GLAND PACKING	PURE GRAPHITE
7	BOLT / STUD / NUT	A 193 Gr.B7/A 194 Gr.2H
6	GASKET	PURE GRAPHITE
5	SPINDLE	SS - 410
4	STOPPER	SS - 410
3	SEAT RING	SS - 410
2	BONNET	ASTM - A - 105
1	BODY	
No.	DESCRIPTION	MATERIAL
MATERIAL & DESCRIPTIONS		



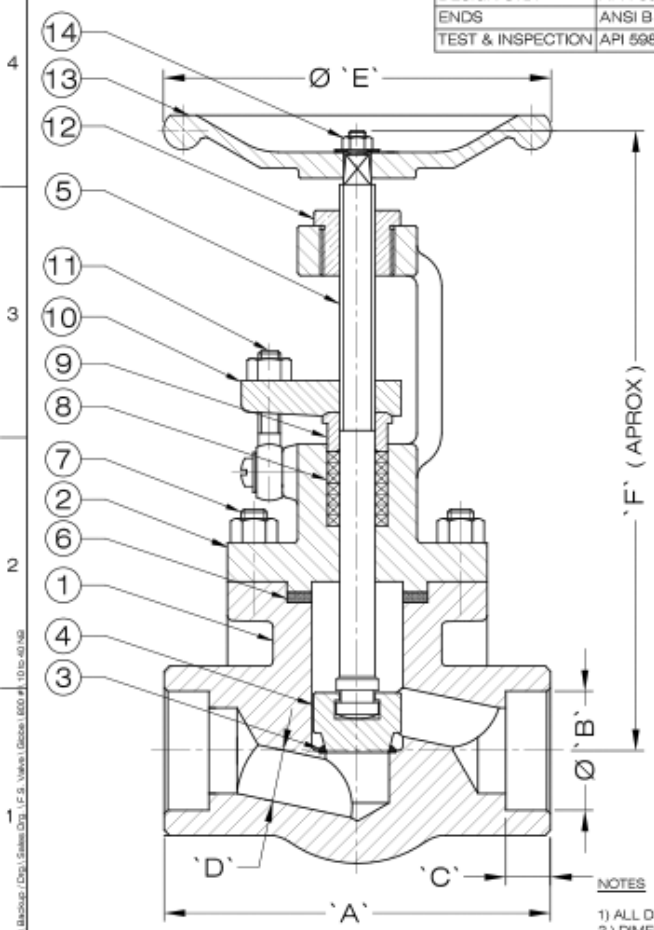
Dalsons Valves

D - 58, MIDC MIRAJ BLOCK MIRAJ
DIST - SANGLI (M.S.) INDIA

DRAWN	L.B.G.	TITLE :-
CHKD.	A.R.D.	800 # GLOBE VALVE (SOCKET WELD ENDS)
APPD.	R.E.D.	
SCALE	N.T.S.	
DATE	18.12.2010	



DRG. No.DV / GLB / F S / 800 / 02



NOTES :-
1) ALL DIMENSIONS ARE IN MM
2) DIMENSIONS 'A' AS PER MANUFACTURES STD.

E:\Backlog\Dep.L.Sales\DRG.L.S.G.Valve (Globe) 800 #.10 to 40 V20